



1 Moraine Crescent, Newcastle Upon Tyne, NE17 7DX

Offers Over £295,000

Hive Estates are delighted to welcome to the market this detached four-bedroom dormer bungalow on Moraine Crescent in Blackhall Mill. Set on a substantial plot, the property enjoys an idyllic location with an abundance of woodland walks right on the doorstep.

Positioned at the entrance of Moraine Crescent, just a stone's throw from the picturesque River Derwent, this charming family home is surrounded by stunning scenery, including Milkwellburn Woods and Chopwell Woodland Park.

Upon entering through the porch, you are greeted by a spacious entrance hallway. The lounge features a beautiful fireplace and cream carpets, creating a warm and inviting atmosphere. The kitchen is fitted with wood cabinetry, black worktops, a breakfast bar, and integrated appliances including an oven, and hob, and provides access to both the utility room and the workshop. There is also a dining room with French doors opening into the conservatory, which flows seamlessly into the garden.

Completing the ground floor are two well-proportioned bedrooms and a family bathroom fitted with a bath, wash basin, and WC.

To the first floor, there are two double bedrooms, one of which benefits from a walk-in dressing room and shower room with access to both bedrooms fitted with a freestanding shower, with built in sauna WC, and wash basin.

Externally, the front of the property offers a driveway providing off-street parking, leading to a workshop with air to air heat pump that could be ideal as a home office or gym, along with a mature front garden. To the rear is a substantial, well-stocked garden filled with mature trees, creating a peaceful setting that attracts a wide variety of wildlife.

Lounge 12'9" x 16'8" (3.90 x 5.09)

Kitchen/Breakfast Room 12'5" x 14'3" (3.80 x 4.35)

Dining Room 8'10" x 10'9" (2.70 x 3.30)

Conservatory 11'5" x 10'2" (3.50 x 3.12)

Utility 5'2" x 6'2" (1.60 x 1.90)

Bedroom 1 6'6" x 11'8" (2.00 x 3.56)

Bedroom 2 8'10" x 10'7" (2.70 x 3.25)

Bathroom 7'2" x 6'10" (2.20 x 2.10)

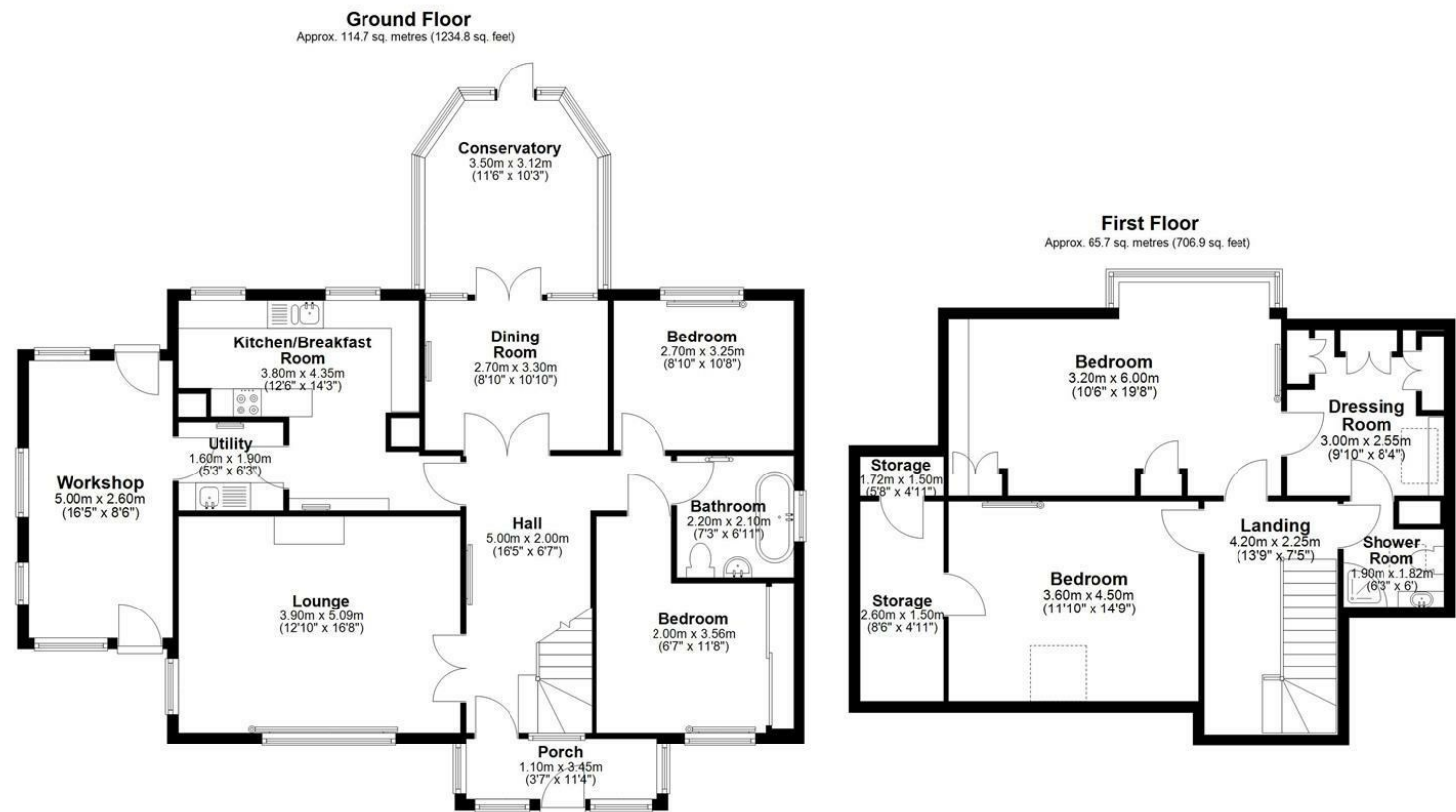
Bedroom 3 11'9" x 14'9" (3.60 x 4.50)

Bedroom 4 10'5" x 19'8" (3.20 x 6.00)

Dressing Room 9'10" x 8'4" (3.00 x 2.55)

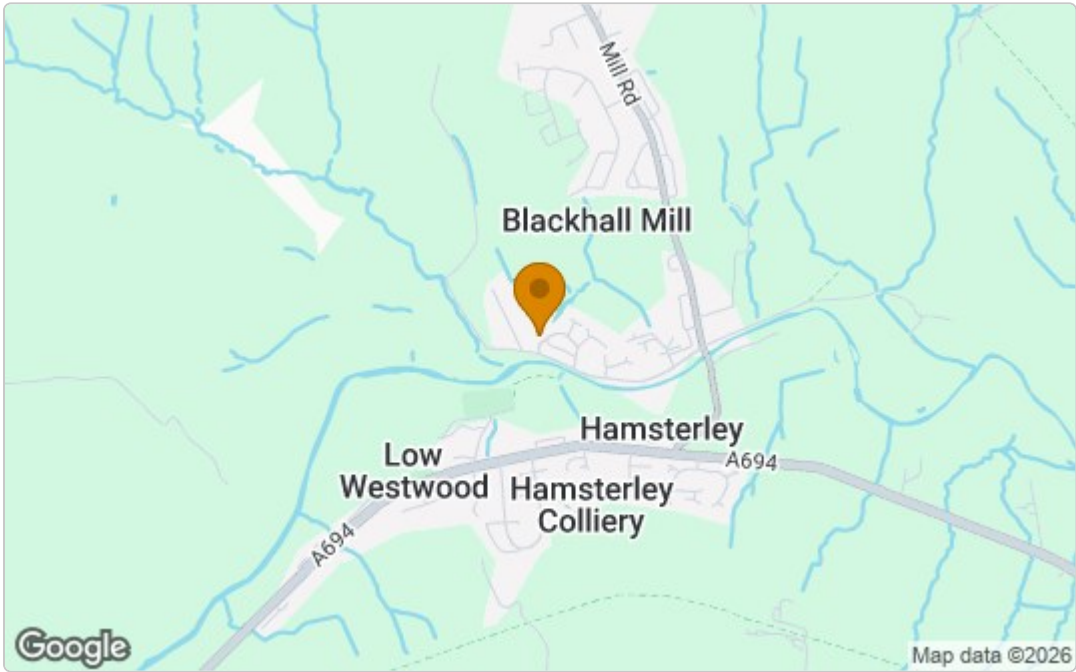
Shower Room 6'2" x 5'11" (1.90 x 1.82)

Floor Plan

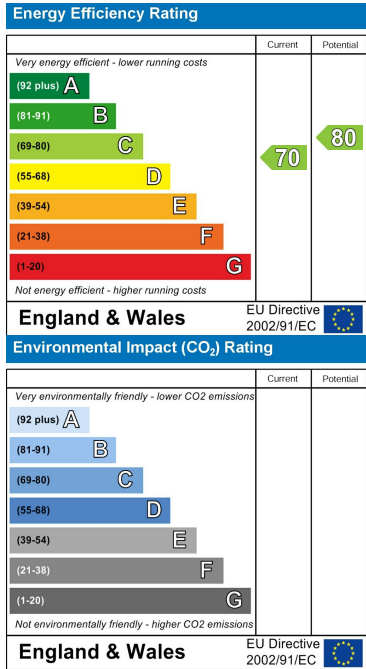


Total area: approx. 180.4 sq. metres (1941.7 sq. feet)

Area Map



Energy Efficiency Graph



These particulars, whilst believed to be accurate are set out as a general outline only for guidance and do not constitute any part of an offer or contract. Intending purchasers should not rely on them as statements of representation of fact, but must satisfy themselves by inspection or otherwise as to their accuracy. No person in this firms employment has the authority to make or give any representation or warranty in respect of the property.